

Vancouver Island Providence Community Association (Providence Farm)

Overview



Our Mission

We are committed to serving the needs and fostering the talents of people in the Cowichan Valley, especially those not easily accepted elsewhere, through our therapeutic community. Our focus is upon the renewal of body and spirit, and upon people caring for the soil, and the soil nurturing the people.





The Sisters of St Anne
acquired the 162 ha
(400 acres) property in
1864.

**

In 1979 the charity was
established -- accepting the
gift of the land and the
responsibility for
stewardship and
management of the
mission.

Today we manage 92,000 sq ft of heritage buildings, ~110 ha (270 acres) of forestlands and ~50 ha (120 acres) of agricultural lands.

The property is zoned A1 and A2
Much of it is in the ALR

Our core activity is offering therapeutic programs designed with and for seniors and individuals with special needs.

The Therapeutic Riding Assoc., the alternative high school and the Cowichan Folk Guild are tenants on the property.



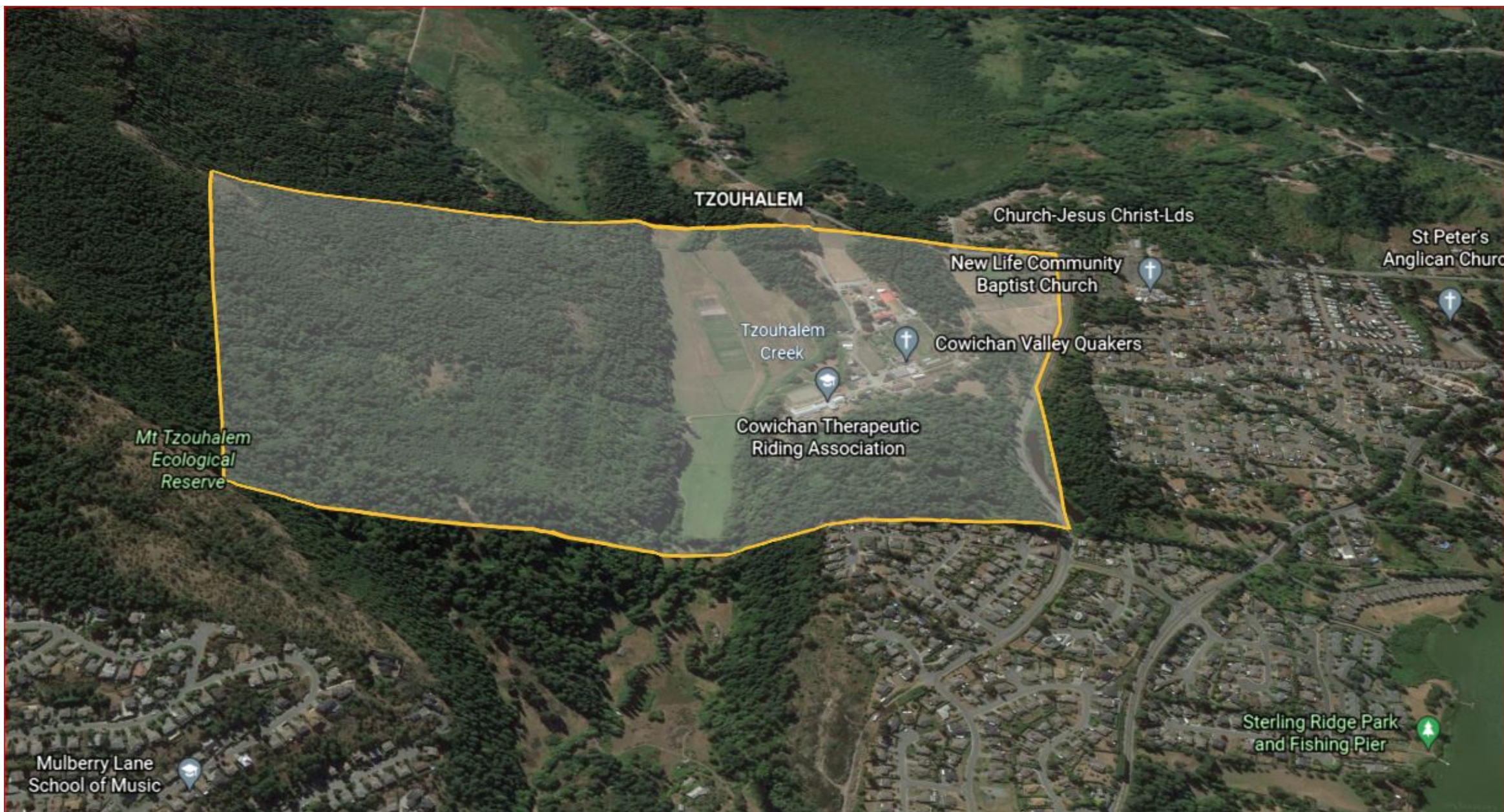
In 2020 the Board completed a 3- year strategic plan for the organization.

This plan recognizes the need to take a long-term approach to land and resource stewardship (forestry and farming); the need to build a renewed relationship with Cowichan Tribes as our closest neighbour; the opportunity to become a leader in nature-based therapeutic programming; and the responsibility to build our relationship with the broader Cowichan community.



Location of the Farm in the Cowichan River Watershed





As we set forth on this ambitious path, we are interested in understanding how the Watershed Council might support and guide our efforts.

