

Seeing Cowichan Forests Beyond Trees

Cowichan Watershed Board



Stephanie Cottell

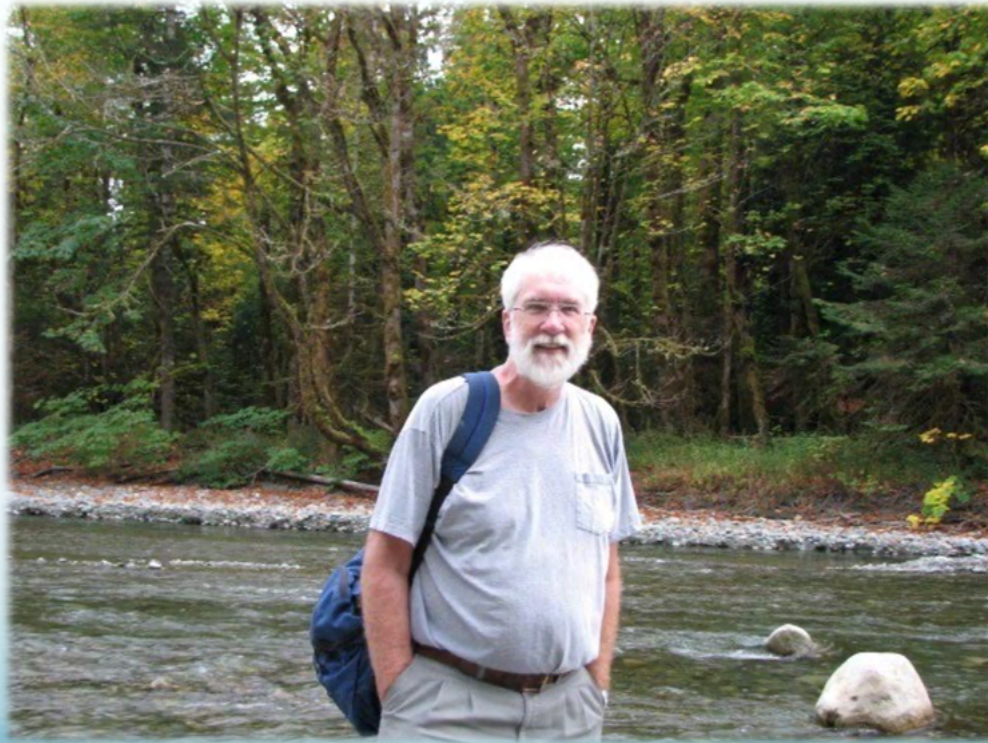
Heather Pritchard

March 29, 2021



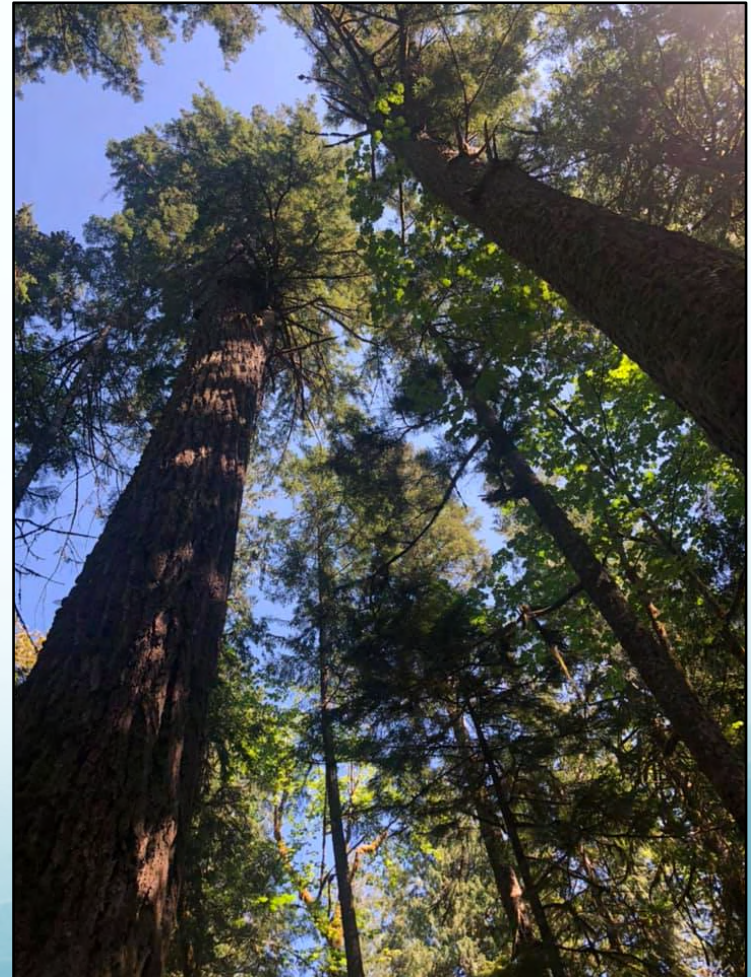
Background

How can the CCLT contribute to forest conservation on private land?



How much land is protected?

- Provincial parks, ecological reserves – 2,474 ha
- Conservation lands - 415 ha
- Covenants - 530 ha
- Fee simple ownership - 685 ha
- → **Less than 10%**



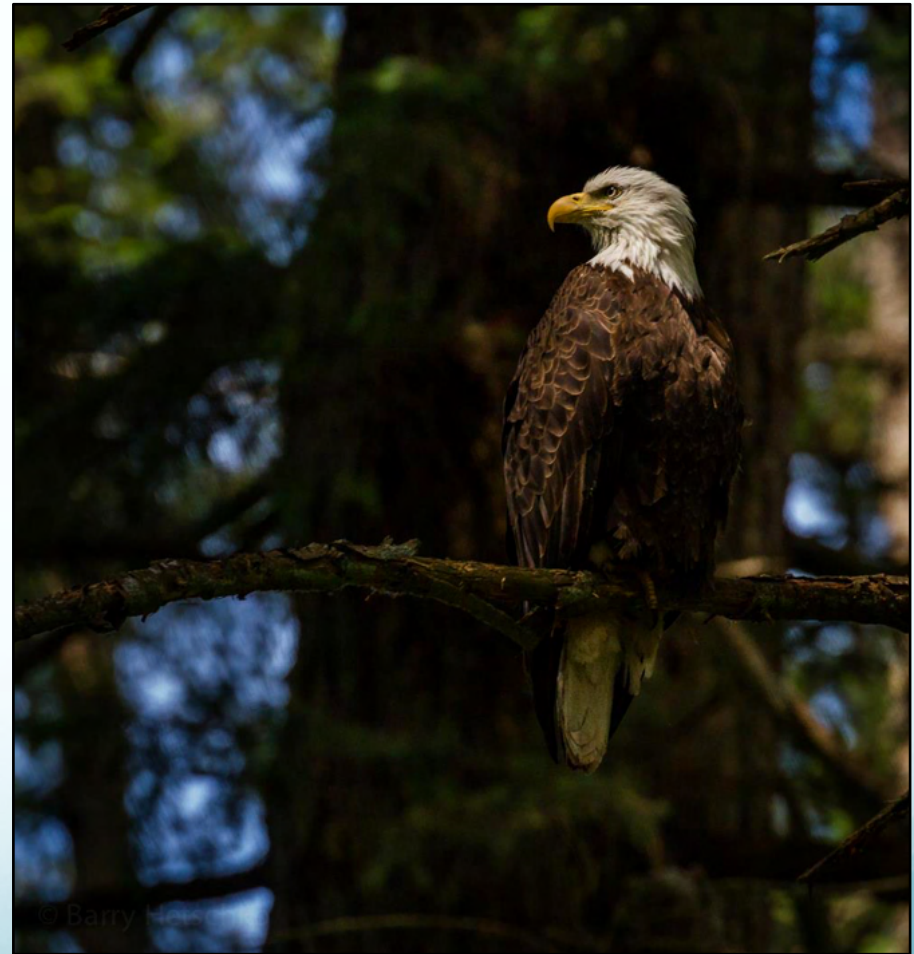
How much is enough?

- **50% of the landscape needs to be managed for conservation**
- Many Cowichan forests are at “**High Risk**”
- Protect **ALL** remaining old growth
- Protect some mature forests
- Manage for old growth



Barriers to land protection

- Lack of conservation targets
- “No” legal requirements
- No financial incentives



Tools in the Toolbox

Private managed Forest land Act

Trusts

Estates

Voluntary Stewardship Agreements

Clustered development

Land acquisition

Eco-gifts

Development permit areas

OCPs

Covenants

Riparian Area Protection Act

Clustered development

Conservation lands

Amenity density bonuses

Conservation community zoning

Density transfers

Municipal Natural Asset Management

Tax exemptions

Carbon offsetting

Conservation strategy

Conservation covenants

- Legally binding
- Protects land in perpetuity
- **Often used with other tools**



“Ecoforestry” Covenants

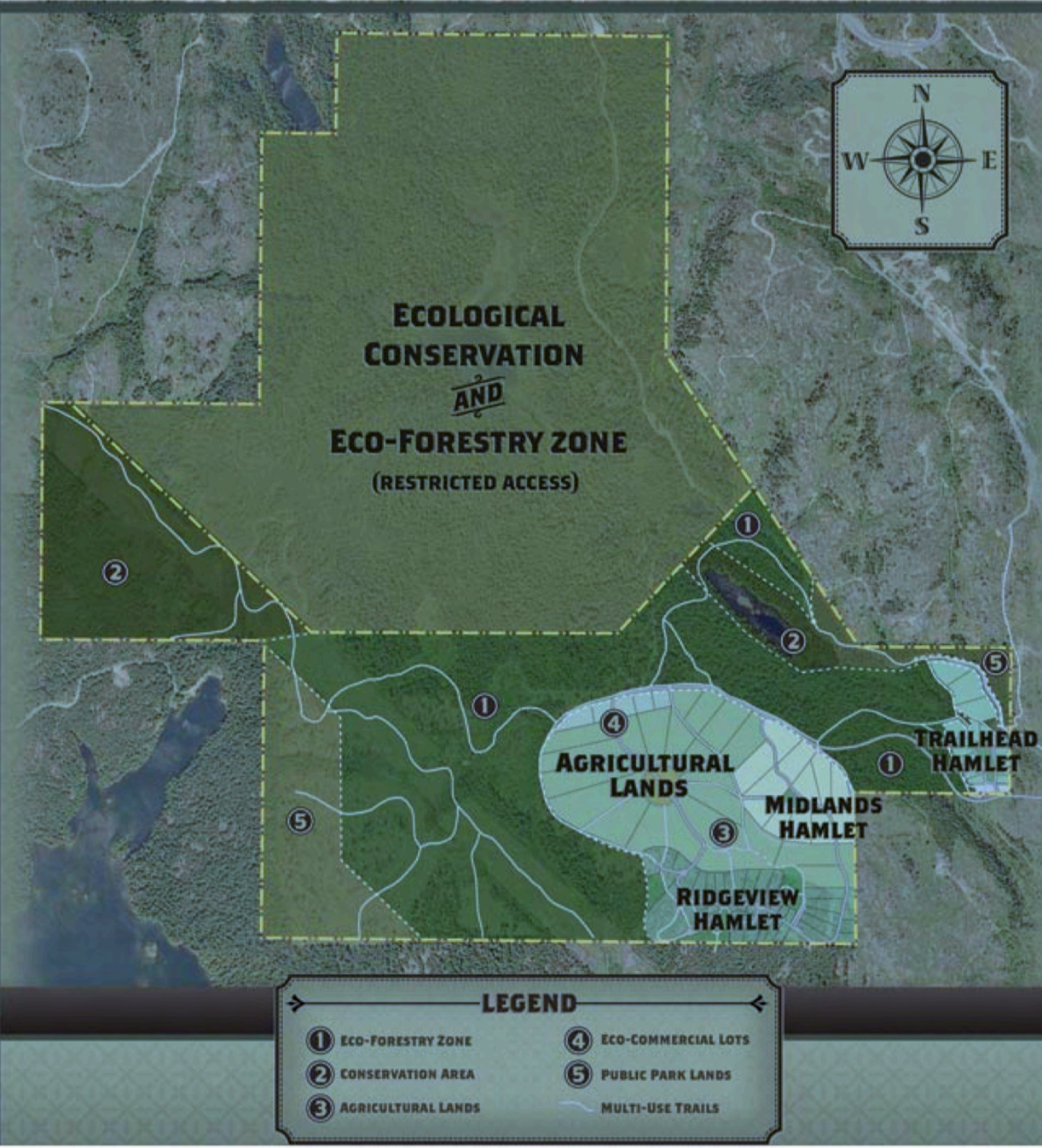












- FN values first
- Protected areas identified
- 85% protected
- Only partial cutting
- Harvest is <75% of growth
- 250 year rotation
- Covenants, trust and FSC certification!

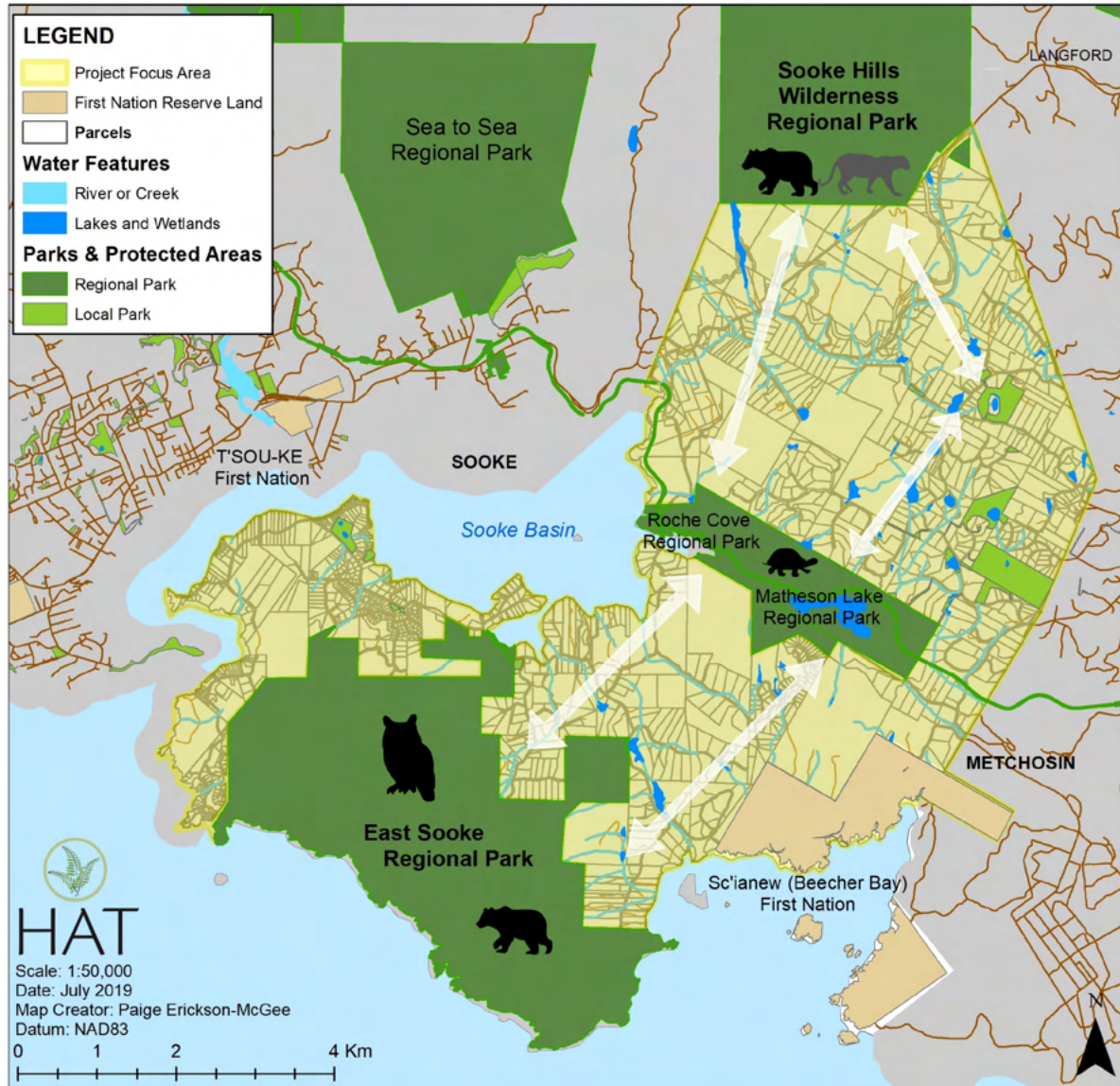
Promote Forest Stewardship

- More options than preservation and clearcuts
- Ecosystem-based principles
 - Focus on what to leave before deciding what to take
- Increase riparian protection
- Build connectivity



Community Stewardship

HAT Good Neighbours Wildlife Corridor Stewardship Project 2018-21



COMOX LAKE

**Coal
Creek Historic
Park**
40 hectares

**2005 CCFS
Purchase**
72 hectares

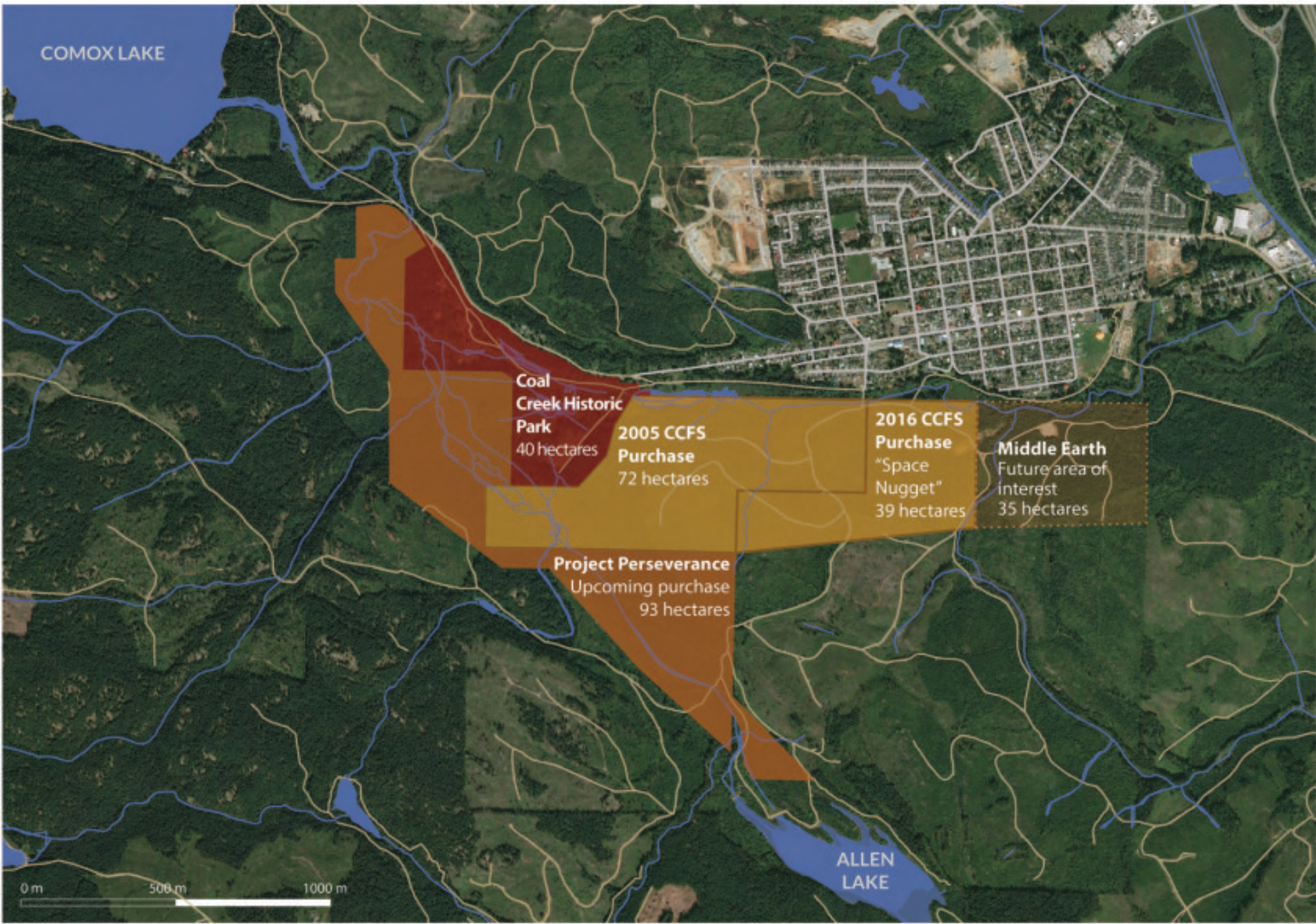
**2016 CCFS
Purchase**
"Space
Nugget"
39 hectares

Middle Earth
Future area of
interest
35 hectares

Project Perseverance
Upcoming purchase
93 hectares

ALLEN
LAKE

0 m 500 m 1000 m



Community Engagement and Collaboration

- Collaborate with other community organizations and local government
- Engage First Nations



Connecting our Work

How can the Cowichan Watershed Board help support these efforts?





Priority 1: Conservation Covenants in Private Forests

- The Cowichan Watershed Board can help strengthen these efforts to secure covenants by expressing support through letters and networking channels

Priority 1 and 2: Covenants and Stewardship

- Establishing a ‘whole watershed’ (terrestrial?) target
 - This helps us situate our proposals/applications as part of a local conservation strategy



Priority 2 and 3: Stewardship and Community Collaboration

- Networking
- Collaborating
- Pooling resources
- Cross-pollinating



Huy tseep q'u Siem!
Thank You!

