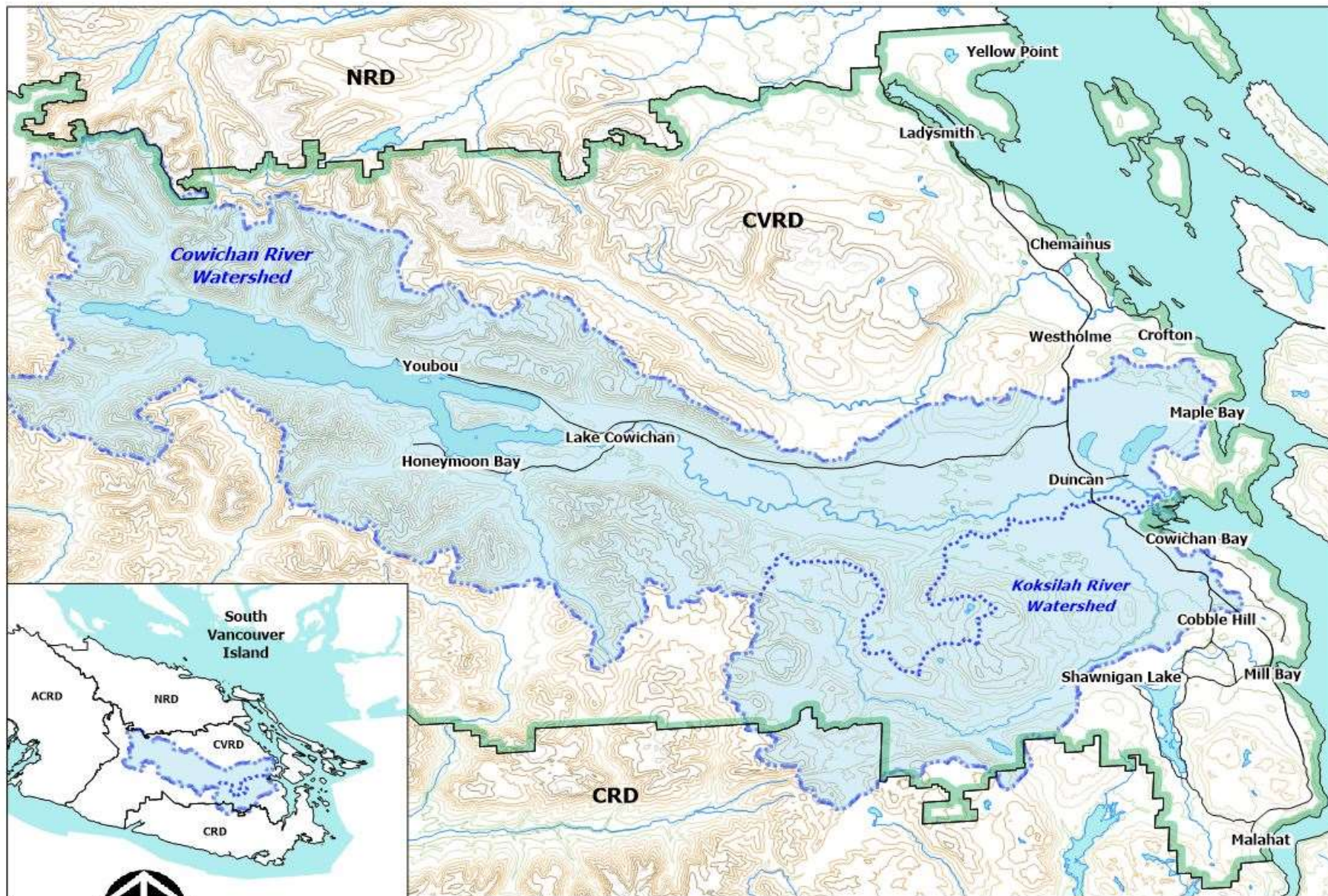


Cowichan Watershed Board Koksilah Flow Update



May 25, 2020



0 10 km

Cowichan & Koksilah Rivers Watershed

Contour Interval: 100 m

M. Kelly - 28/06/2018

Koksilah Flow Factoids...

- An “unbuffered” river system with very high winter freshets and very low summer flows.
- Highest Elevation “Waterloo Mountain” 1070 M – considerably lower than Cowichan Watershed peaks
- Altered hydrology due to land use practices over last century
- Subject to winter floods and summer low water conditions....

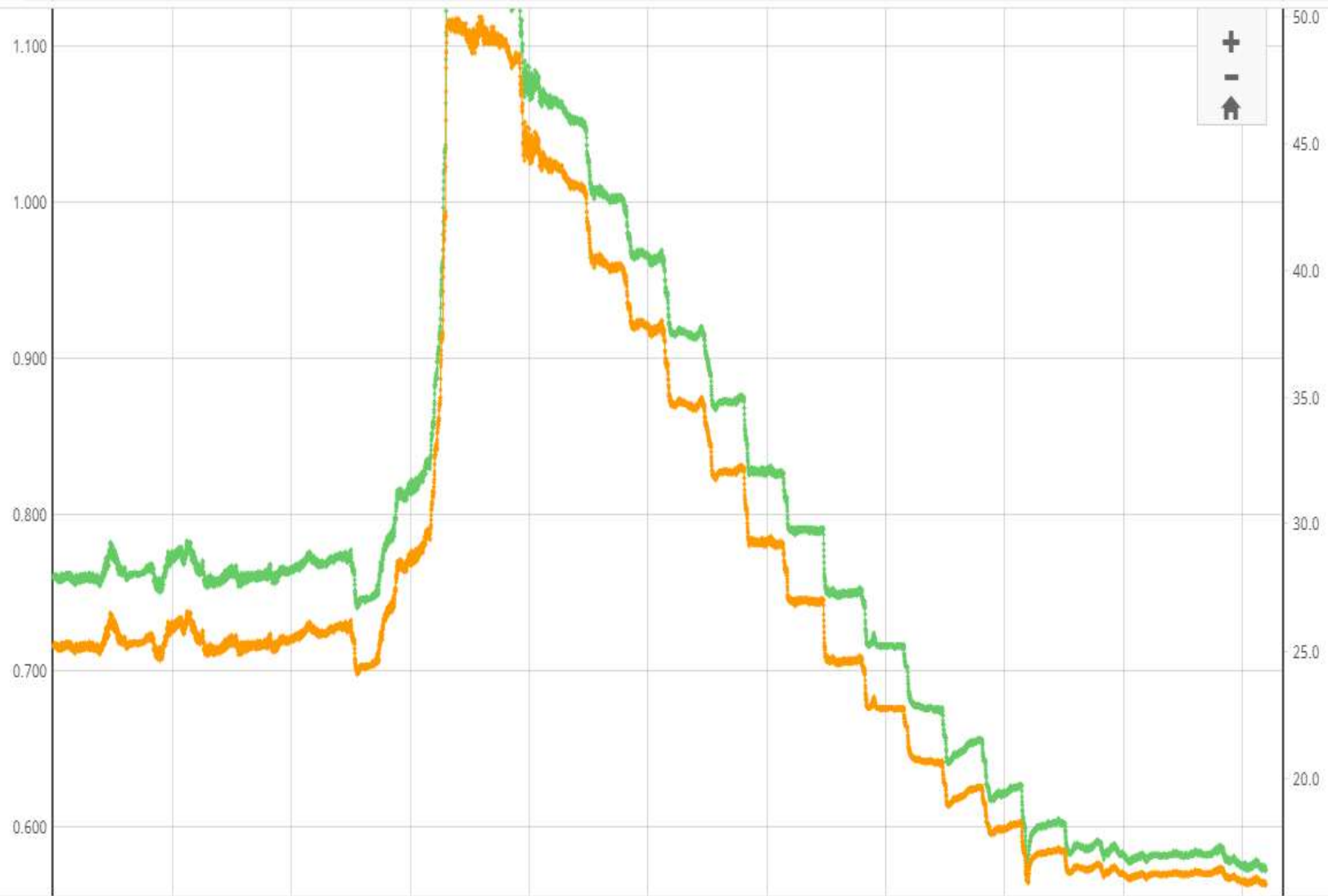


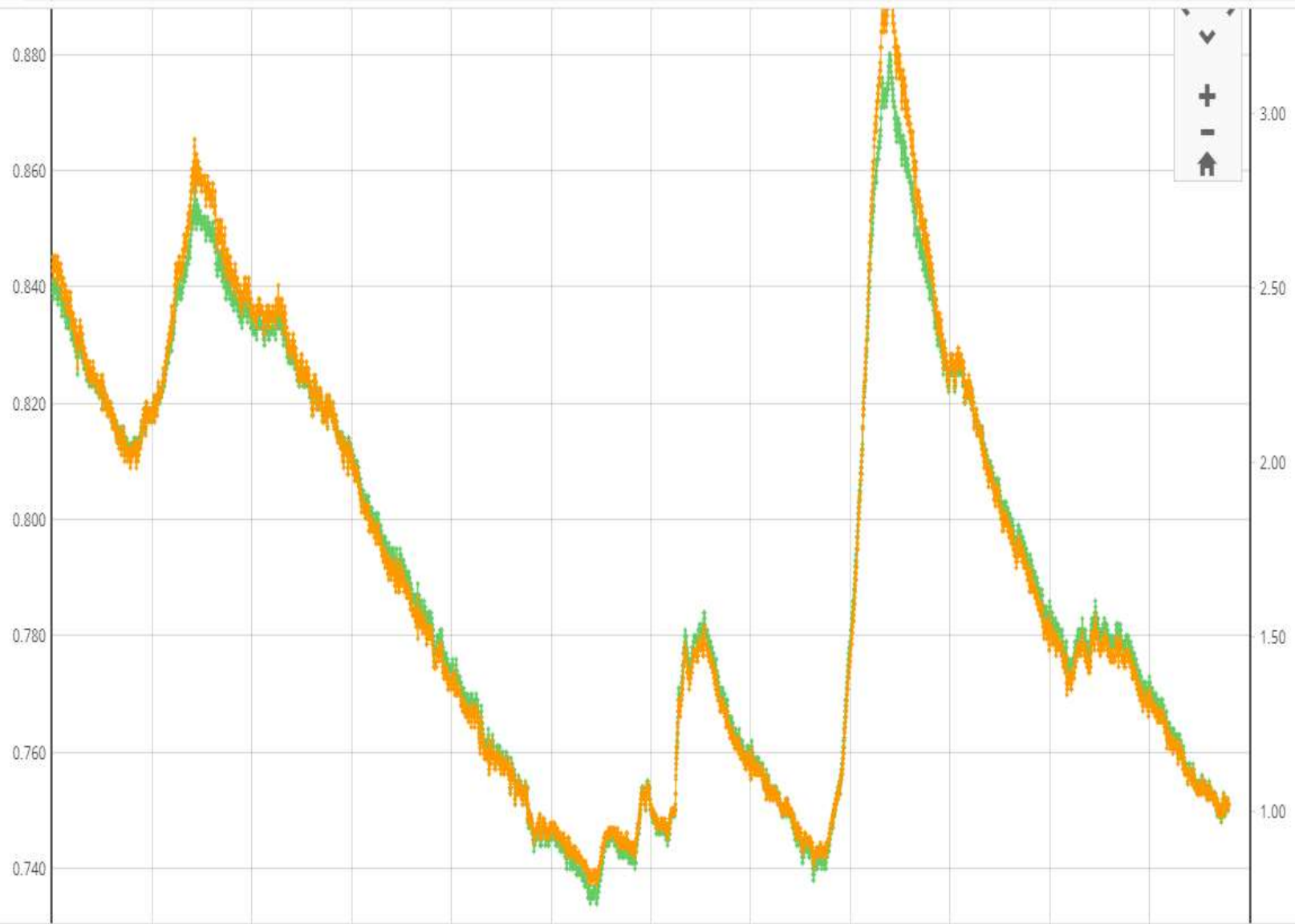
Stream (Augmented Systems in Green)	WSC Station ID	Latest Discharge (L/s)	MAD (L/s)	% MAD	Latest Max Daily Temp (oC)
Vancouver Island					
ASH RIVER BELOW MORAN CREEK	08HB023	13600	15016	91	14
BINGS CREEK NEAR THE MOUTH	08HA016	55.1	476	12	14.4
CARNATION CREEK AT THE MOUTH	08HB069	129	819	16	10.3
CHEMAINUS RIVER NEAR WESTHOLME	08HA001	29200	18900	154	12.1
COTTONWOOD CREEK HEADWATERS	08HA072	654	750	87	8.6
COWICHAN RIVER AT LAKE COWICHAN	08HA002	28300	44900	63	11.9
COWICHAN RIVER NEAR DUNCAN	08HA011	31200	55000	57	-
GARBAGE CREEK NEAR THE MOUTH	08HA068	43.3	232	19	-
HARRIS CREEK NEAR LAKE COWICHAN	08HA070	1330	3240	41	10.2
KOKSILAH RIVER AT COWICHAN STATION	08HA003	921	9810	9	14.6
MILLSTONE RIVER AT NANAIMO	08HB032	494	2550	19	16.7
KEOGH RIVER NEAR PORT HARDY	08HF014	774	5430	14	15.6
NANAIMO RIVER NEAR CASSIDY	08HB034	31100	39900	78	-
RENFREW CREEK NEAR PORT RENFREW	08HA069	251	1670	15	7.4
SALMON RIVER BELOW CAMPBELL LAKE DIVERSION	08HD032	42900	10667	402	7.8
SAN JUAN RIVER NEAR PORT RENFREW	08HA010	15700	49200	32	12.8
SARITA RIVER NEAR BAMFIELD	08HB014	4870	19900	24	13.3

Points to Ponder...

- Koksilah exhibiting lowest flow as a % of mean annual discharge of any gauged river on Vancouver Island
- No Agricultural irrigation at the time this data was collected
- Natural watershed characteristics that make Koksilah prone to quick rises and drops in flow (no natural storage, relatively steep watershed) are being accentuated by lack of snowpack (lower elevation watershed than Cowichan), historic land use and climate change...







Bottom Line....

- Both Cowichan and Koksilah watersheds have challenges with respect to water supply
- CWB (and our partners) are actively engaged in processes and projects to address these challenges
- Different watersheds call for different solutions
- Working to ensure adequate environmental flows continues to be a priority for us – with good reason...

