

A detailed map of the Southern Strait of Georgia National Marine Conservation Area Reserve (pSSoG-NMCCAR). The map shows the coastline of British Columbia, Canada, with various islands and waterways labeled. Key locations include Kuper Island, Crofton, Saltspring Island, Pender Island, North Pender Island, Tumbo Island, Saloma Island, Moresby Island, and Portland Island. The map also shows the Strait of Georgia, the Strait of Juan de Fuca, and the U.S. Border. The map is overlaid with a grid of yellow and green squares, indicating different management zones or areas of interest. The title "Proposed Southern Strait of Georgia National Marine Conservation Area Reserve (pSSoG-NMCCAR)" is prominently displayed in the center of the map.

Proposed Southern Strait of Georgia National Marine Conservation Area Reserve (pSSoG-NMCCAR)

Cowichan Watershed Board
May 25, 2020

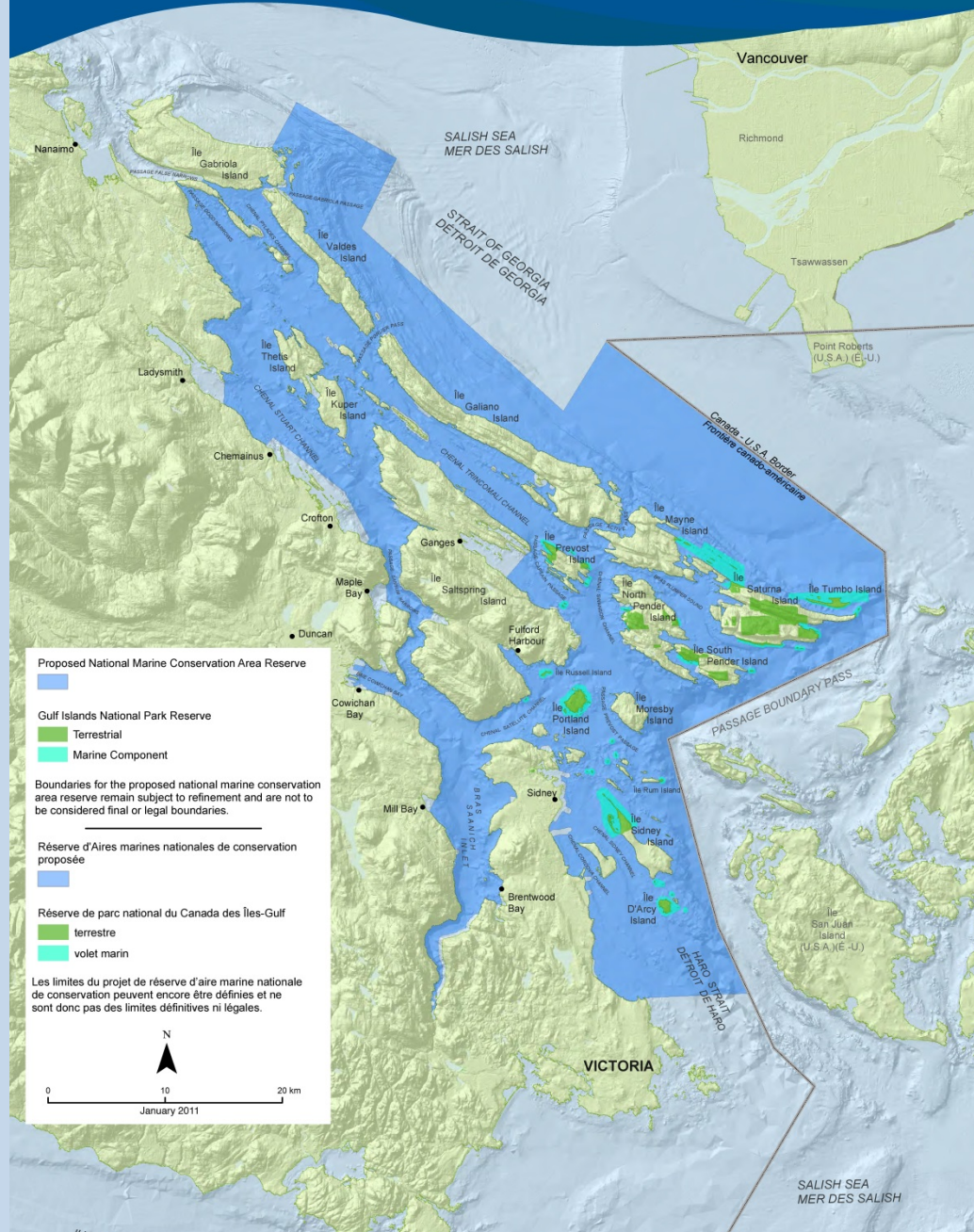
Presenter: John Stewart, MNGD

pSSoG-NMCA

- I. Introduction & My Role
- II. Overview of NMCA(R)s
- III. Establishment Process
- IV. Engagement Focus

Southern Strait of Georgia National Marine Conservation Area Reserve Boundary Concept

Concept de limites de la r serve d'aire marine nationale de conservation dans la r gion sud du d troit de Georgia



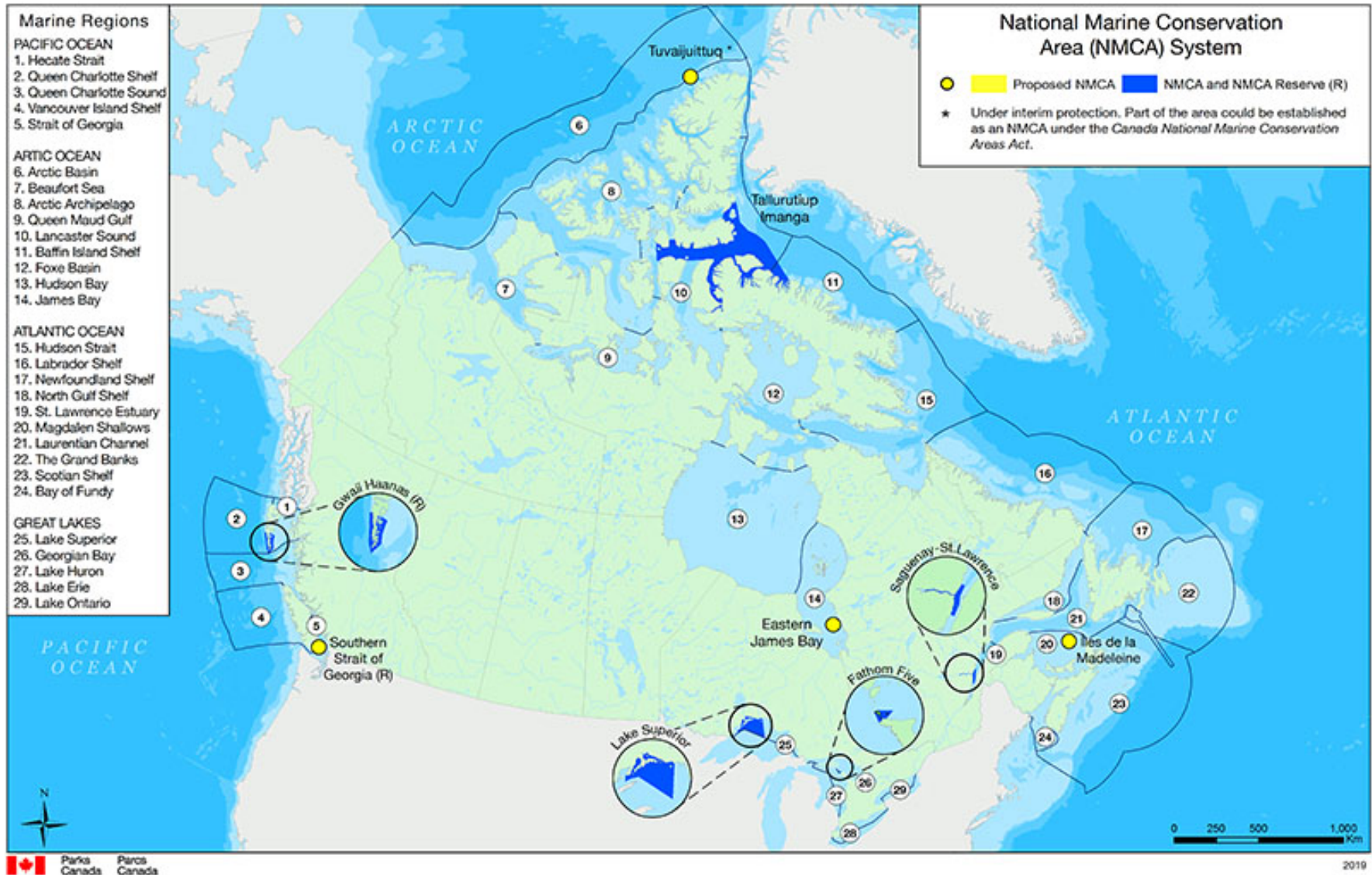
What is a NMCA(R)?

A national marine conservation area (NMCA) is a type of marine protected area that is managed and used in an ecologically sustainable manner and that meets the needs of present and future generations. It helps maintain healthy, functioning ecosystems and includes the seabed, the water above it and all living resources.

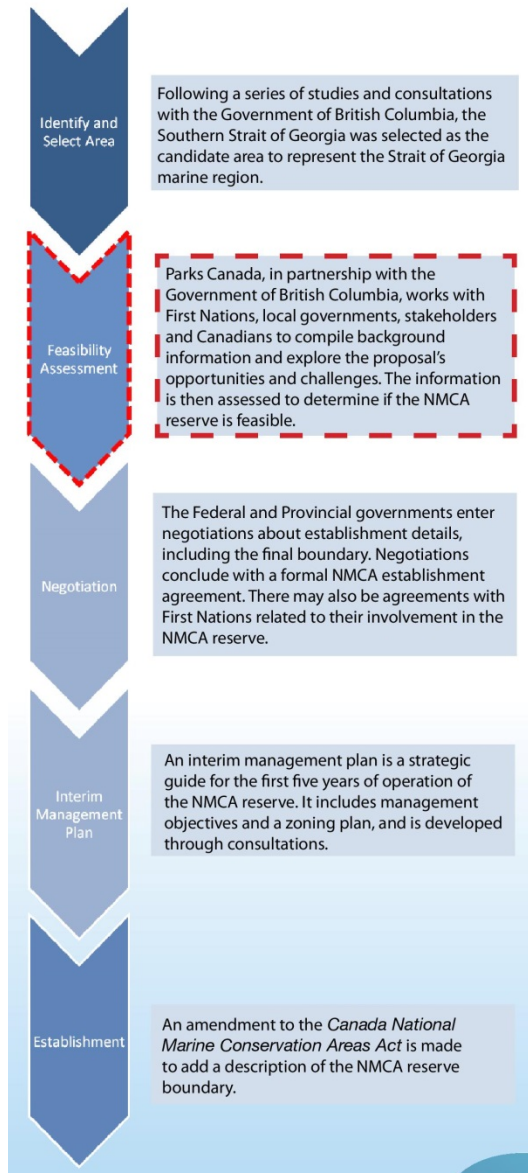
What is a NMCA(R)?

Activities such as commercial and recreational fishing, commercial shipping, marine transportation, utility corridors, and a range of recreation and tourism activities continue in an NMCA, but with an emphasis on conservation-oriented management practices. Traditional food, social and ceremonial harvesting by First Nations peoples continues in an NMCA reserve. Oil and gas exploration and development, and mining are not allowed. Ocean dumping is only allowed under certain conditions.

NMCA(R)s in Canada



NMCA Establishment Process



Engagement Focus

- 1) Boundary
- 2) Governance
- 3) Potential Impacts & Benefits

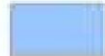
Engagement Focus

1) Boundary

- Rationale
- Potentially Excluded Areas
- Human component of the environment needs to be considered

EXAMPLE: Proposed excluded areas

Proposed National Marine Conservation Area Reserve



Excluded Areas



Harbours, Bays and Coves



Parks and Ecological Reserve buffers



Provincial Parks and Ecological Reserves

Buffered Tenures



Commercial



Industrial



Transportation



Utility

0 5 10 km





Engagement Focus

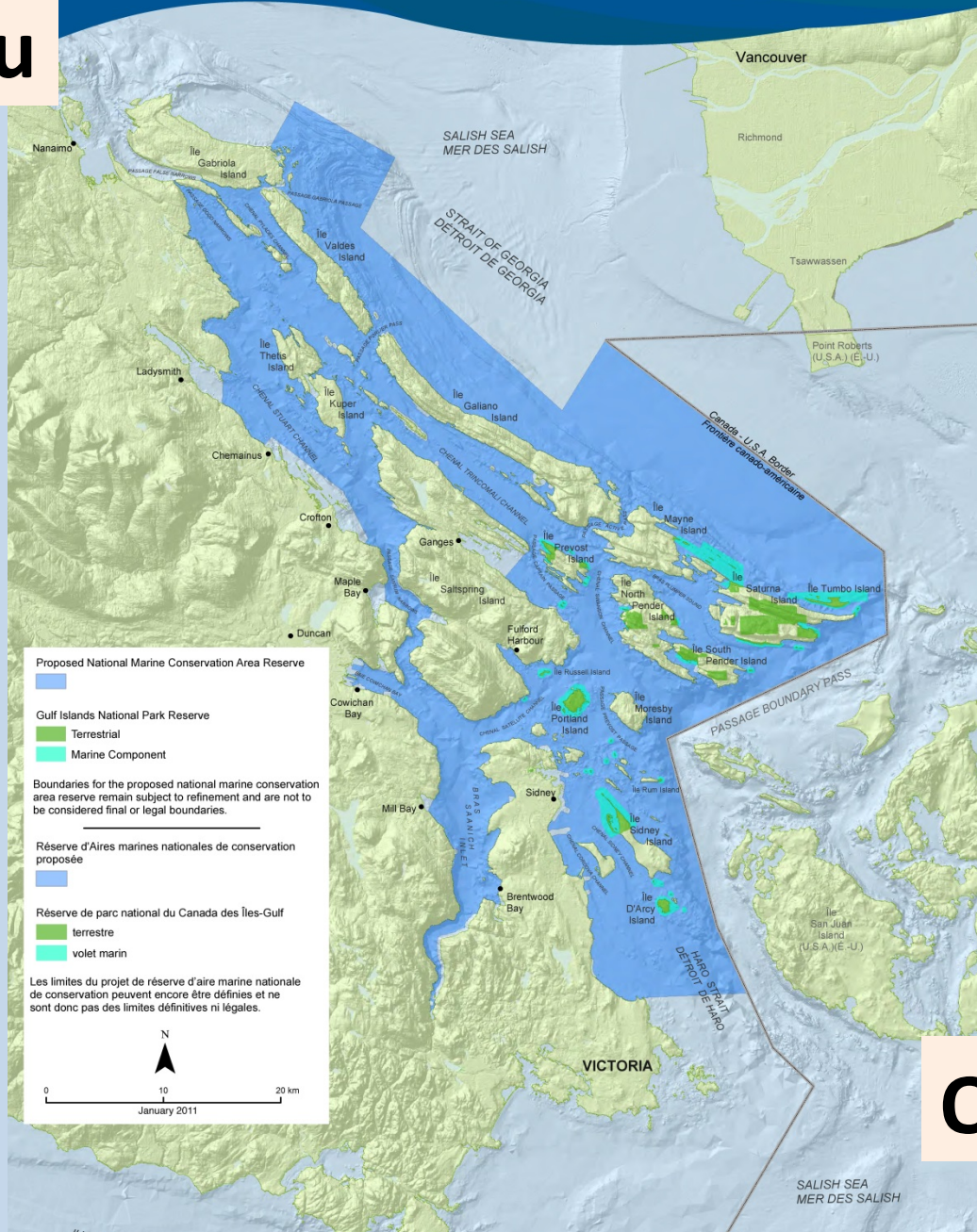
2) Governance

- Parks Canada's Spectrum of Cooperative Management Strategies
- Discussions on Co-Governance alongside neighbours

Engagement Focus

- ## 3) Potential Impacts and Benefits
- Socio-Cultural & Economic Impact Analysis
 - Potential Impacts and Benefits
 - Social Determinants to Health
 - Baseline: Pre-Settlement

Thank you



Questions?