



Joint Utility Board Sewage Treatment Plant Outfall Relocation Project: Project Update

Presentation for:

Cowichan Watershed Board

By:

Clay Reitsma, M.Eng., P.Eng.
Senior Manager, Engineering
District of North Cowichan

March 30, 2020

Presentation Outline

- Update on project.
- Seek comment on proposed pipe routes.
- Provide information on continued First Nations, stakeholder and public engagement processes.

Next Steps: Determine routing for pipe from treatment plant to outfall.

- Marine routing:
 - Options based on scientific study (Stage 2 EIS Marine Pipeline Route).
 - Four routes studied.
 - Preference for pipe to lay on seabed.
 - Full report on website.
- Land routing:
 - 2 major options with variations
 - Pipe underground mostly in road right-of-ways.
- Still lots of work to do.



Next Steps: Marine pipeline .

5

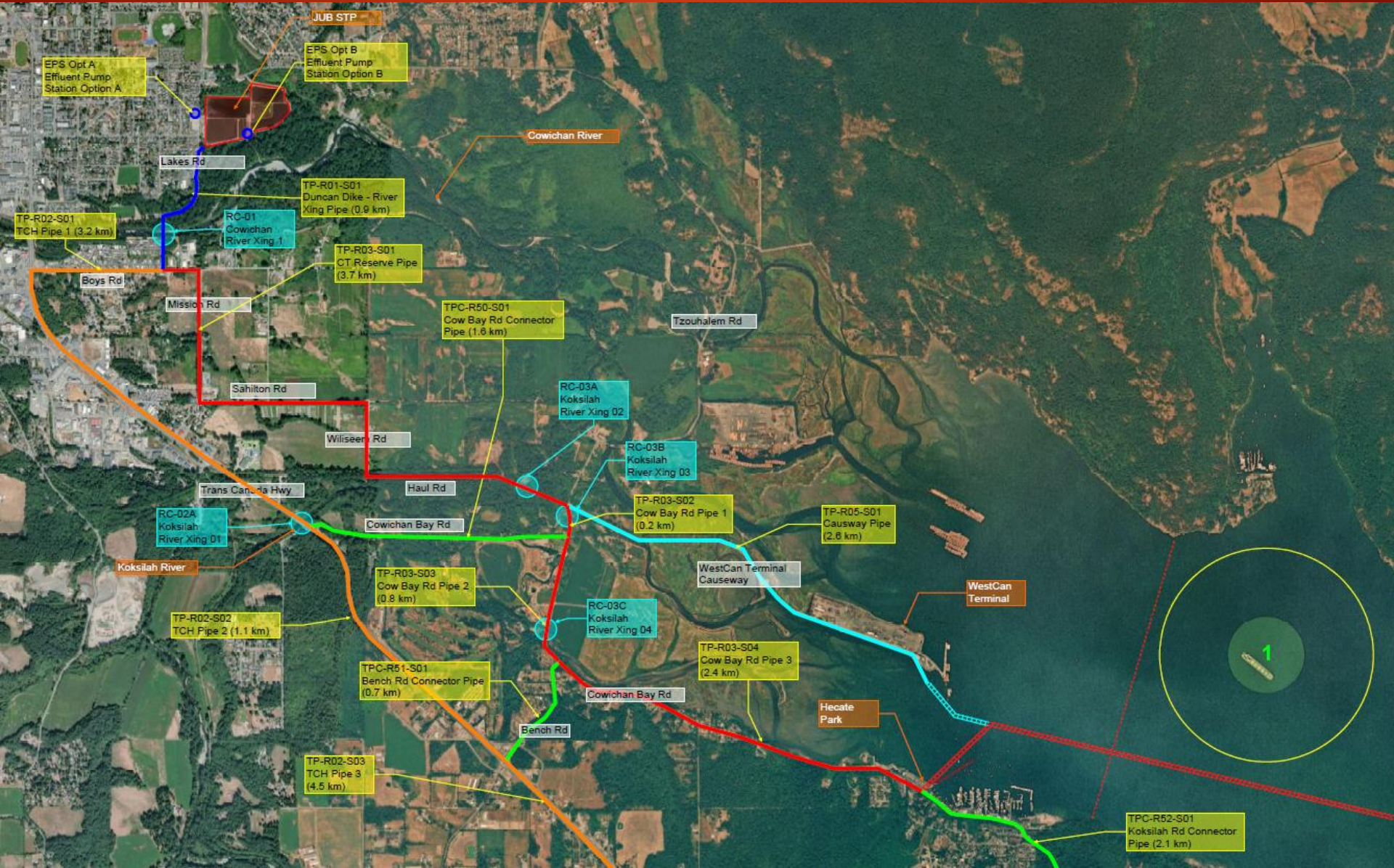
- Four options studied
 - Westcan Terminal Road
 - Hecate Park boat launch
 - Sutherland Drive
 - Seaside Road
- Biophysical surveys: Marine, intertidal and subtidal areas for each route.
- Higher environmental impacts for Westcan and Hecate Park routes.
- Temporary impacts during construction (managed using best practices, mitigation and compensation as required)
- Minimal impact post construction.
- Full report available on project website.



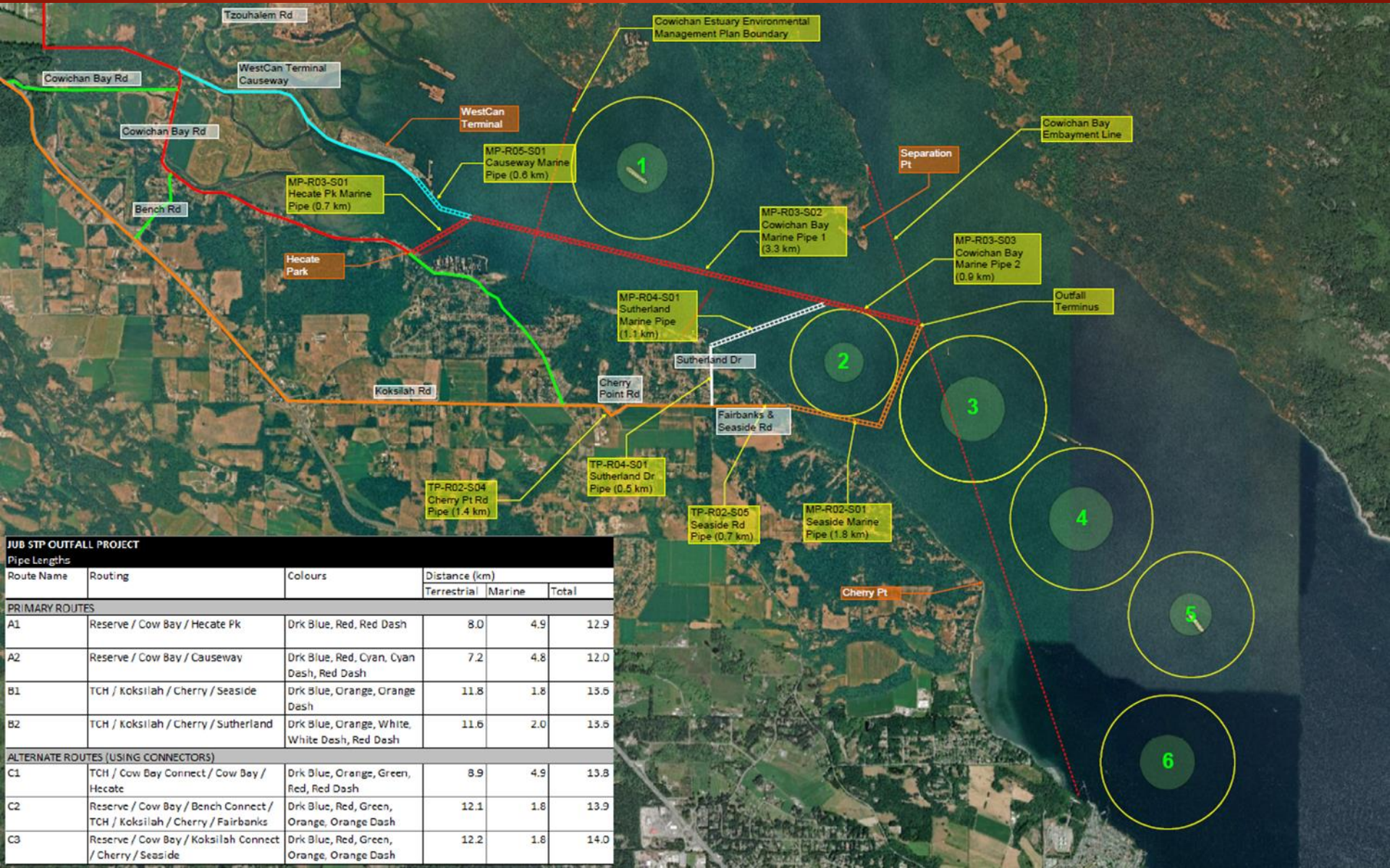
Next Steps: Terrestrial pipeline.

- Two primary options under consideration:
 - Through Cowichan Tribes Reserve to one of the four marine accesses.
 - Via Trans-Canada Highway to Seaside or Sutherland accesses.
- Need to study further:
 - Engineering constraints.
 - Environmental and archeological assessments.
 - Cost.
- Will look for co-benefits.
 - Working closely with Cowichan Tribes.

Next Steps: Terrestrial pipeline.



Next Steps: Terrestrial pipeline.



JUB STP OUTFALL PROJECT					
Pipe Lengths					
Route Name	Routing	Colours	Distance (km)		
			Terrestrial	Marine	Total
PRIMARY ROUTES					
A1	Reserve / Cow Bay / Hecate Pk	Drk Blue, Red, Red Dash	8.0	4.9	12.9
A2	Reserve / Cow Bay / Causeway	Drk Blue, Red, Cyan, Cyan Dash, Red Dash	7.2	4.8	12.0
B1	TCH / Koksilah / Cherry / Seaside	Drk Blue, Orange, Orange Dash	11.8	1.8	13.5
B2	TCH / Koksilah / Cherry / Sutherland	Drk Blue, Orange, White, White Dash, Red Dash	11.6	2.0	13.5
ALTERNATE ROUTES (USING CONNECTORS)					
C1	TCH / Cow Bay Connect / Cow Bay / Hecate	Drk Blue, Orange, Green, Red, Red Dash	8.9	4.9	13.8
C2	Reserve / Cow Bay / Bench Connect / TCH / Koksilah / Cherry / Fairbanks	Drk Blue, Red, Green, Orange, Orange Dash	12.1	1.8	13.9
C3	Reserve / Cow Bay / Koksilah Connect / Cherry / Seaside	Drk Blue, Red, Green, Orange, Orange Dash	12.2	1.8	14.0

Next Steps: Engagement and consultation.

9

- Challenging times!
- Ongoing consultation with local **First Nations**.
- **Stakeholder** engagement through online meetings, emails.
- Project Update #3 being prepared.
- **Public engagement** through media/social media, email notifications, PlaceSpeak, video (delayed for now).



Getting more information.

10

- Updates will be posted at:
www.NorthCowichan.ca/JUBOutfallProject
- To be kept informed, subscribe to updates at
www.NorthCowichan.ca (see below for how to access **Notifications** on our website).

