

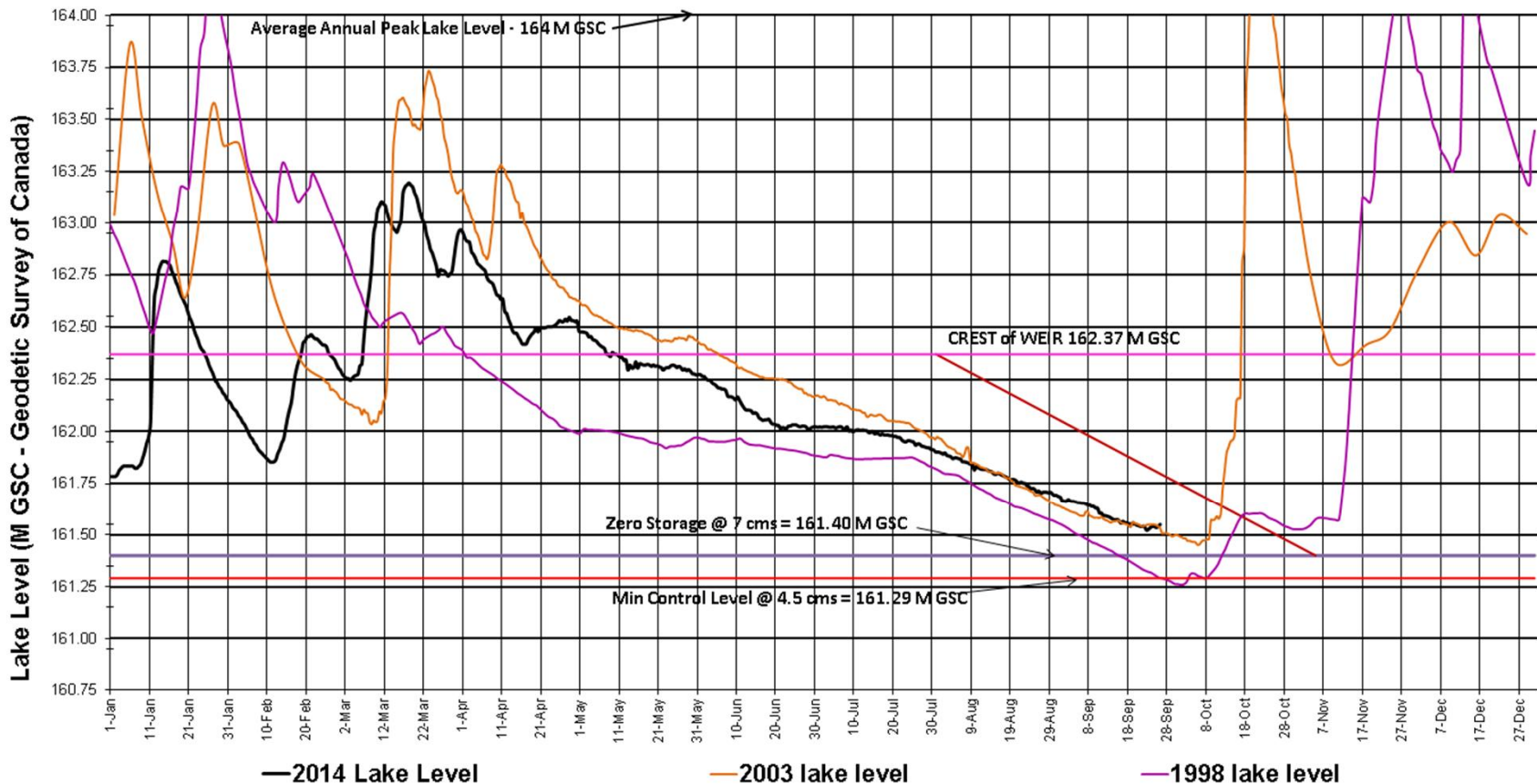
Cowichan Lake and River status update

TAC Sep 26, 2014

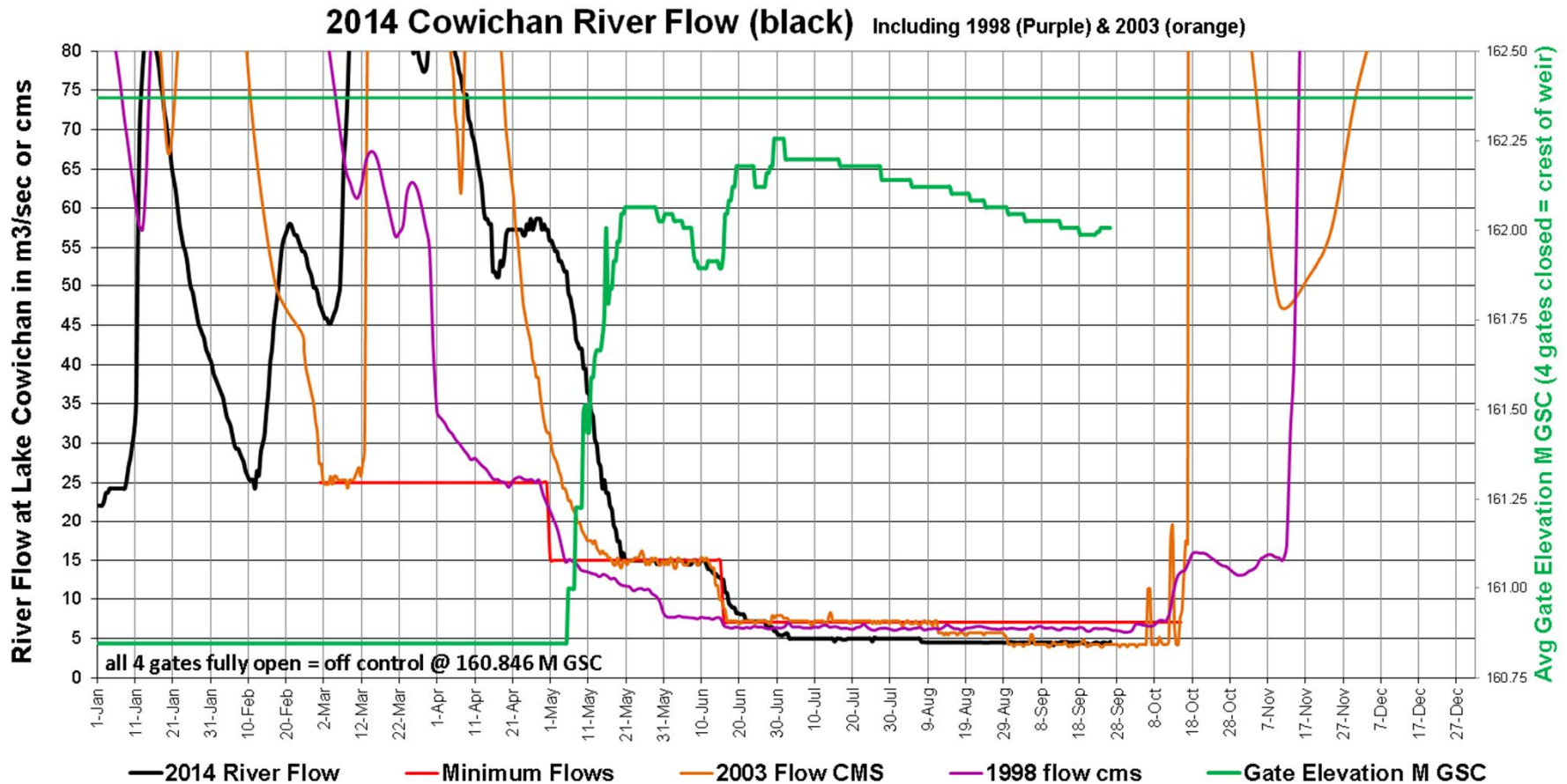


Lake level nearing end of supply – conditions dependent on when fall rains arrive

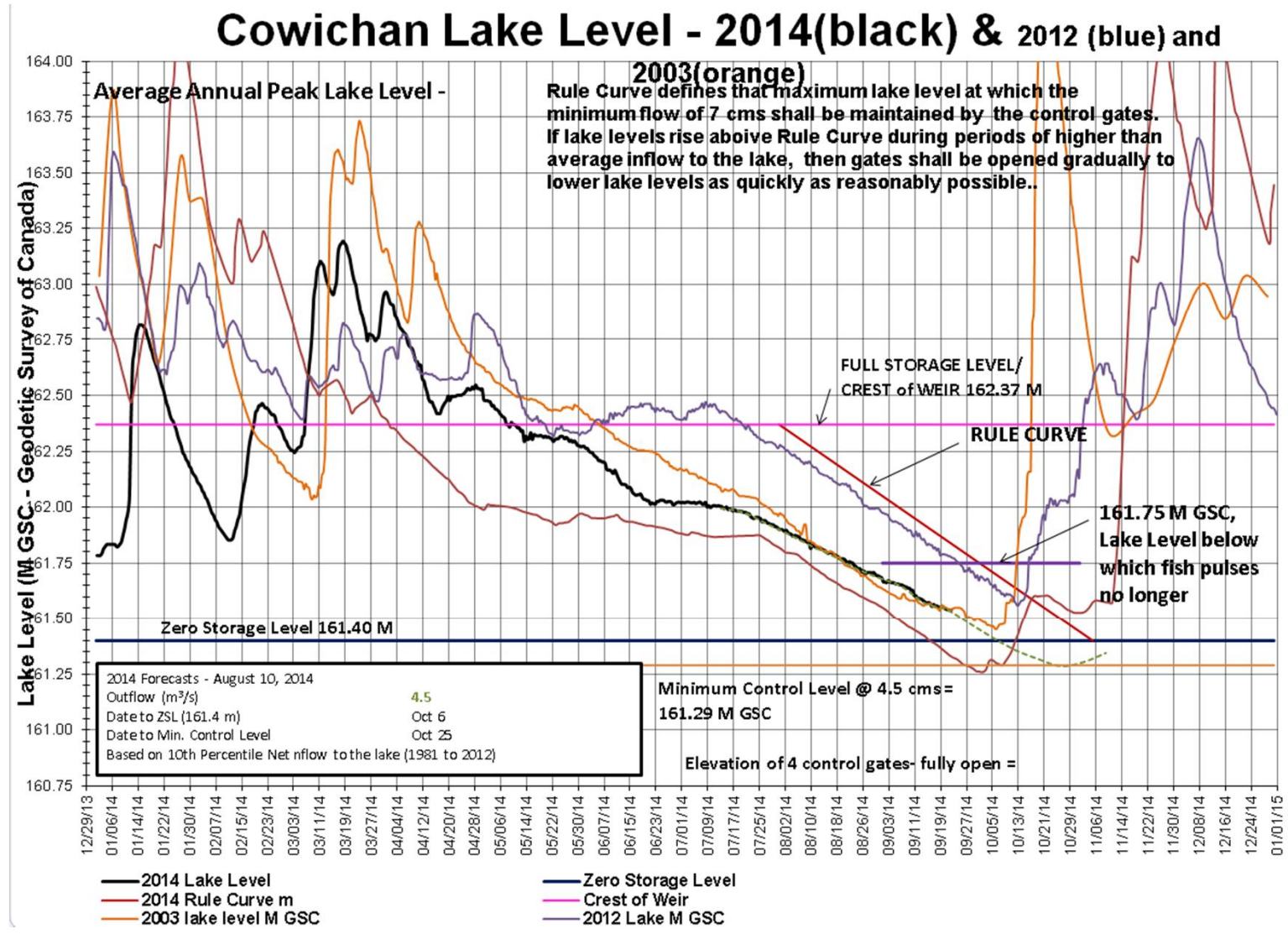
Cowichan Lake Level - 2014 (black) & 1998 (Purple) & 2003 (orange)



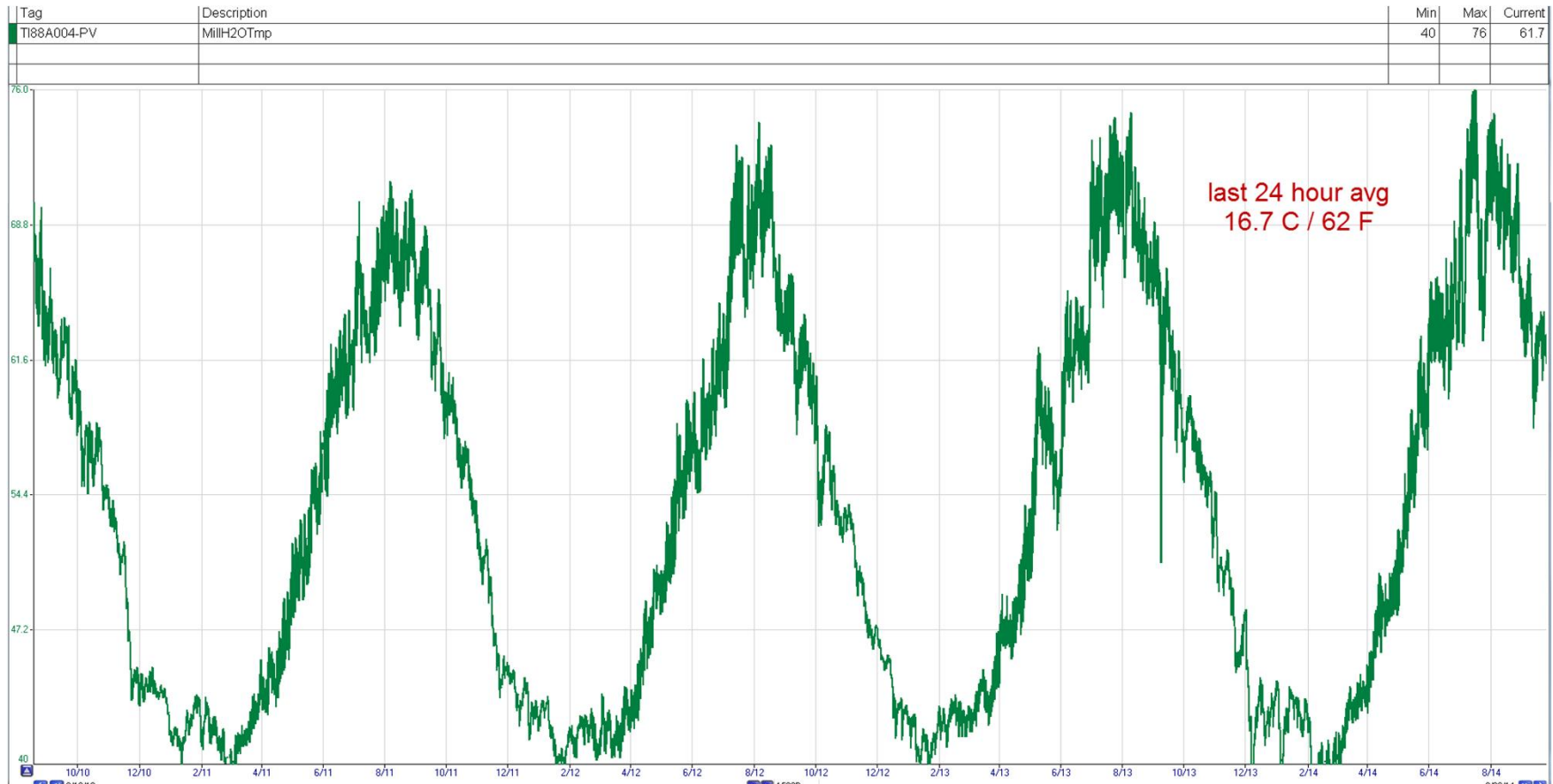
River flow at 4.5 cms since Aug. 7. Given current low lake levels and prediction of dry fall, flow held at 4.5 cms until rain arrives



Kerr Wood Leidal – min control @ Oct 25



River temperature repeats year after year – previous day avg of 17 C



Markers recently added to South face of gate structure to illustrate key elevations as:

1. Crest of Weir
2. Addition of 30 cm
3. Annual mean high water
4. Various years peak elevations of lake water
5. 200 year flood level

